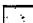


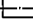

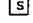


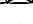
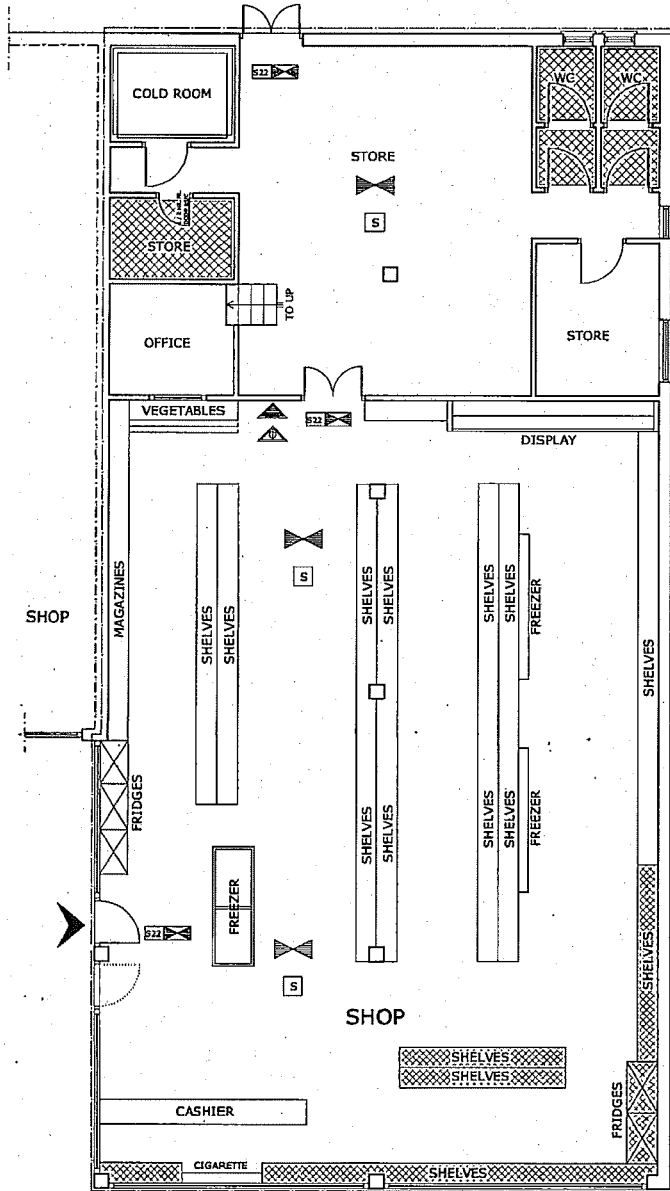


APPENDIX C

LEGEND

-  LIQUOR SALE
-  WC, PASSAGEWAY, ETC
-  LIQUOR STORAGE
-  AMBIT OF LICENSED PREMISES
-  SAFETY LIGHTING
-  SMOKE DETECTOR
-  CARBON DIOXIDE FIRE EXTINGUISHER
-  9 LT. WATER FIRE EXTINGUISHER
-  INTERNALLY ILLUMINATED FIRE ESCAPE SIGN (BS 5266)



EXISTING GROUND FLOOR

27 JUL 2005

THE CONTENTS OF THIS PLAN INCLUDING THE PRINTED NOTES ARE COPYRIGHT AND REPRODUCTION IN WHOLE OR PART IS NOT PERMITTED WITHOUT PRIOR CONSENT OF ANVA LTD. IN WRITING

CAPITOL EXPRESS
 11 SNOWDON PARADE
 MAIDSTONE
 KENT ME14 5NS

EXISTING
 - GROUND FLOOR PLAN

SCALE: 1/100

REF. NO : 271.05/01

DATE: JUNE. 05

DRG BY: A.AY

ANVA LTD.

P.O. BOX 1827
 ILFORD, IG2 7WJ

TEL: 020 8599 5036 FAX: 020 8586 4401
 MOBILE: 077 10942923 / 079 31393989

- 1 JUL 2005